

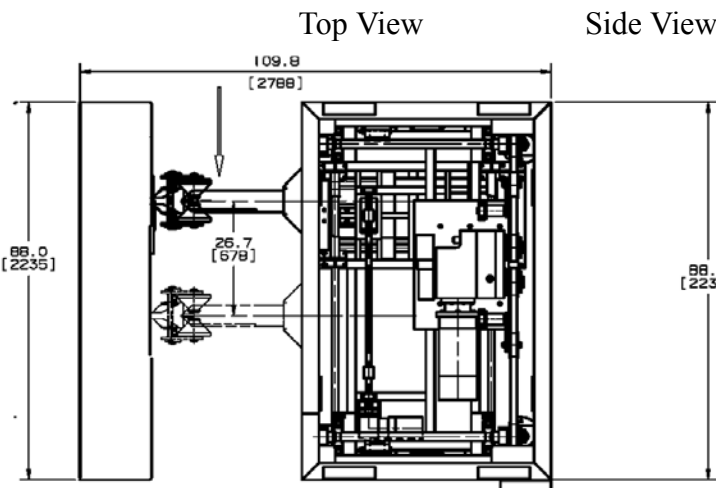
# AUTOMATIC HOG SPLITTER

## Model JCK-2

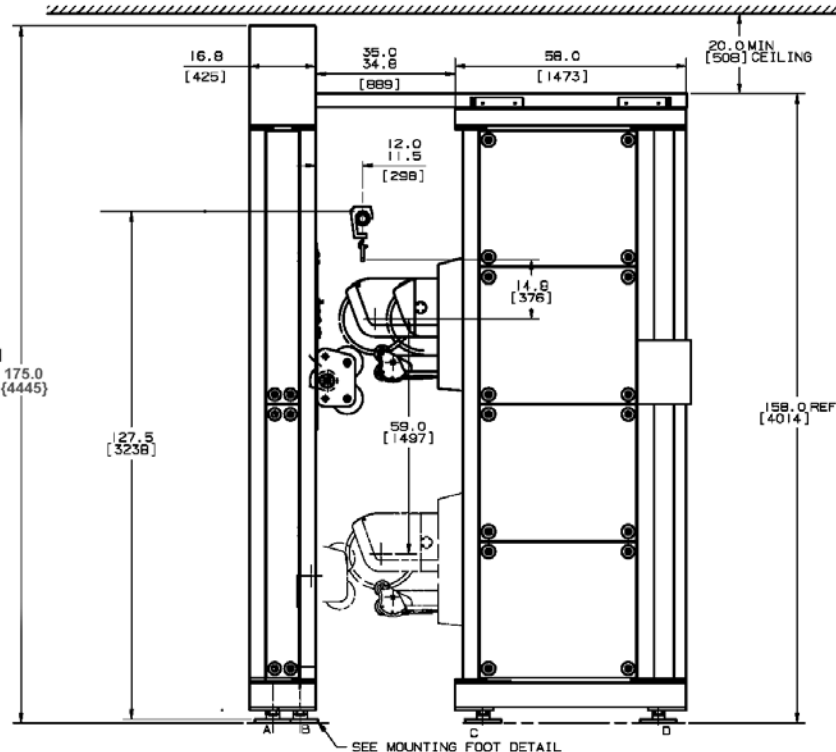
The Jarvis Model JCK-2-  
electric - automatic splitter for hogs.  
U.S. Patent No. 6,126,536  
U.S. Patent No. 6,468,146  
Foreign Patents

# JARVIS

- Production rate of 650 head per hour.
- Higher production rates.
- Faster line operations.
- Uniform feather bone division.
- Higher amounts of speciality products.
- Easier spinal cord removal.
- More bones for meat recovery systems.
- Adapts to any type of slaughter line-gambrels, trolleys, with or without a conveyor.
- Automatic santizing of saw blade, back up rollers, and front rollers.
- Automatic cutting head lubrication system.
- Operator friendly PC based control panel.



Side View



## THE ULTIMATE HOG SPLITTING MACHINE

# AUTOMATIC HOG SPLITTER

## Model JCK-2

<b>Specifications</b>
-----------------------

Drive	Electric
-------	----------

**Model JCK-2**

Operating Air Pressure	85 psi	5.9 bar
Operating Water Pressure	45 psi	3.1 bar
Operating Consumption (per sanitization cycle with optional saw cage wash)	1.5 gal	5.76 L
Maximum Production Rate		650 / hour
Controls		
Automatic	PC Based open Architecture	
Blade Speed	Variable - up to 1410 rpm	
Blade Diameter	18 in	457 mm
Overall Dimensions (l x w x h)	88 x 110 x 175 in 224 x 279 x 444 cm	
Total Weight	9,248 lbs	4195 kg
Splitting Station	6043 lbs	2744 kg
Backup Station	3199 lbs	1451 kg

**Electric Power requirements**

Total Power Consumption	57.6 hp	43 kw
Operating Voltage	480 V, 3 phase, 60 Hz	
	Full Load Current 58.7 amp	
	380 V, 3 phase, 60 Hz	
	Full Load Current 71 amp	

<b>Equipment Selection and Accessories</b>	<b>Order Number</b>
--	---------------------

Model JCK-2	380 V, 3 phase, 60 Hz	4004329
	480 V, 3 phase, 60 Hz	4004326

Blade	<i>Please specify blade preference when ordering.</i>	
18.0 in diameter x 0.032 in Thick / 457 mm x 0.81 mm Thick - 30 Teeth		1023496
18.0 in diameter x 0.040 in Thick / 457 mm x 1.01 mm Thick - 30 Teeth		1023497
18.0 in diameter x 0.032 in Thick / 457 mm x 0.81 mm Thick - 64 Teeth		1023580
18.3 in diameter x 0.040 in Thick / 465 mm x 1.01 mm Thick - 240 Teeth		1023637



Products for the meat and poultry industry